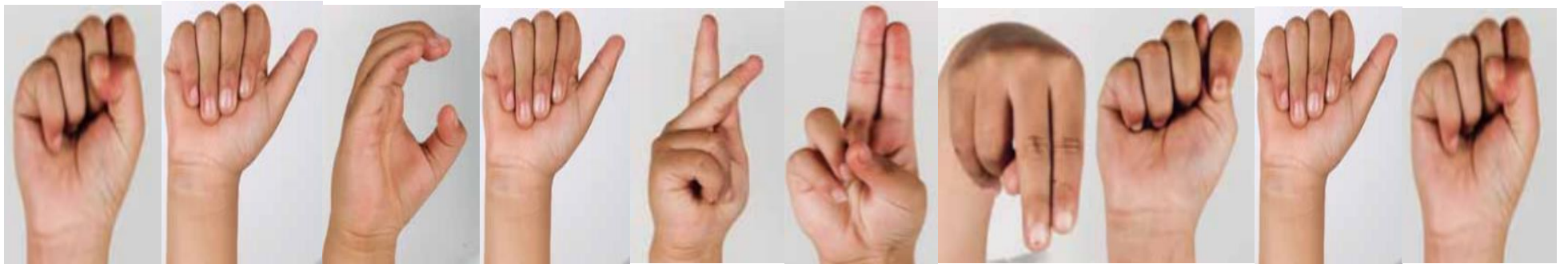


VOCABULARIO EN LSM

DELETREO

Sacapuntas



=

S-a-c-a-p-u-n-t-a-s

Goma



= G-o-m-a

Lápiz



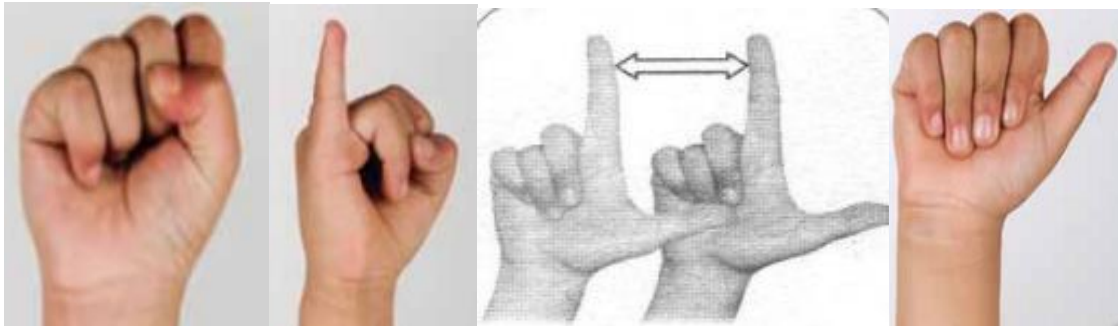
= L-á-p-i-z

Cuaderno



C-u-a-d-e-r-n-o

Silla



= S-i-l-l-a

Escritorio



=

E-s-c-r-i-t-o-r-i-o

Pizarrón



=

P-i-z-a-r-r-ó-n

Puerta



= P-u-e-r-t-a

Ventana



=

V-e-n-t-a-n-a

Compas



=

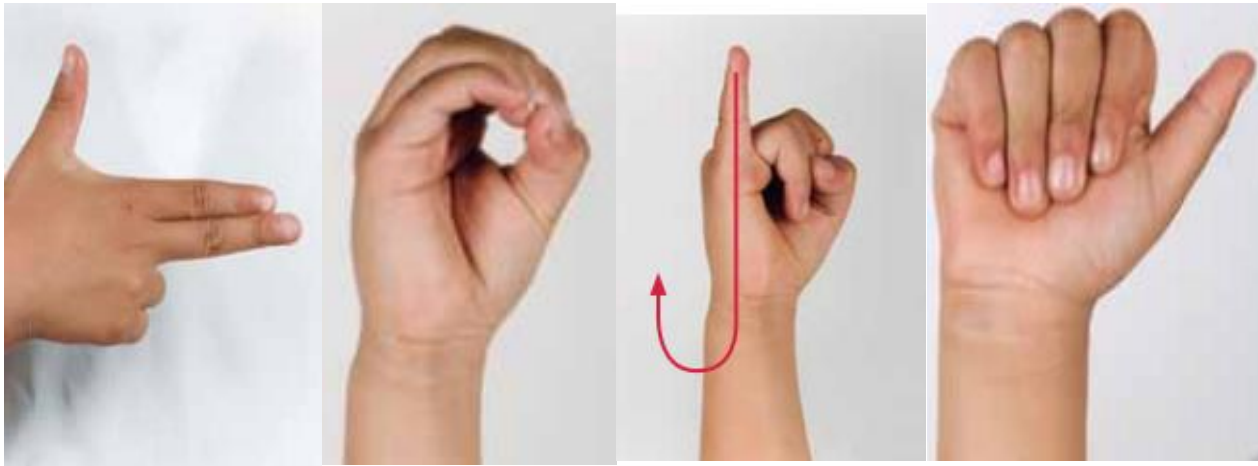
C-o-m-p-a-s

Papel



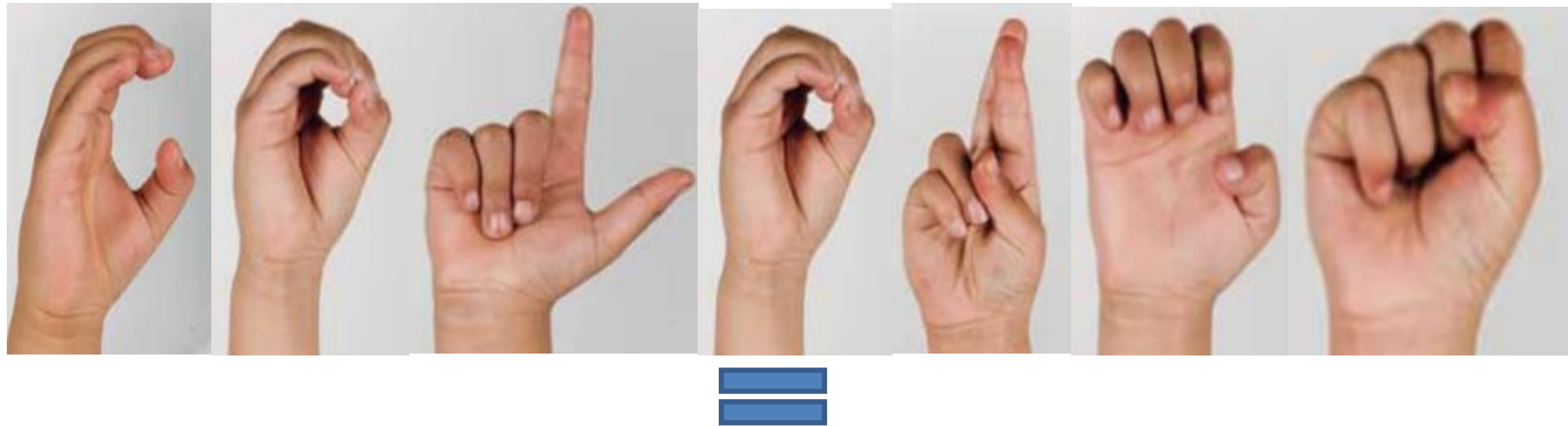
= P-a-p-e-l

Hoja



= H-o-j-a

Colores



C-o-l-o-r-e-s

Escuela



=

E-s-c-u-e-l-a

Pluma



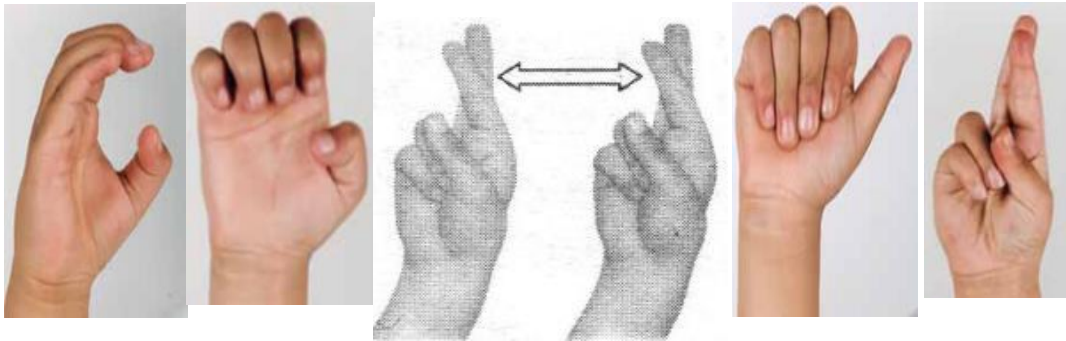
= P-l-u-m-a

Abrir



= A-b-r-i-r

Cerrar



= C-e-rr-a-r

Computadora



=

C-o-m-p-u-t-a-d-o-r-a

Bandera



B-a-n-d-e-r-a

